

ONLINE SAFETY



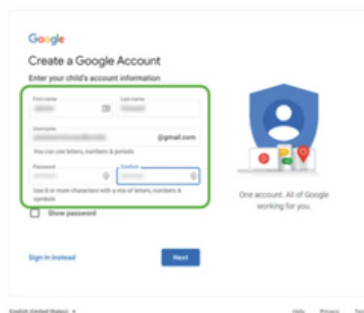
YOUTUBE ADVICE FOR PARENTS OF SECONDARY AGE PUPILS

What is it?

YouTube is an online video platform where users can watch, create and share videos on any topic. When used effectively it has great benefits with educational content and entertainment that may interest your child. However, there can be concerns regarding inappropriate content, advertisements and interaction within comment sections that can be inappropriate for your child.

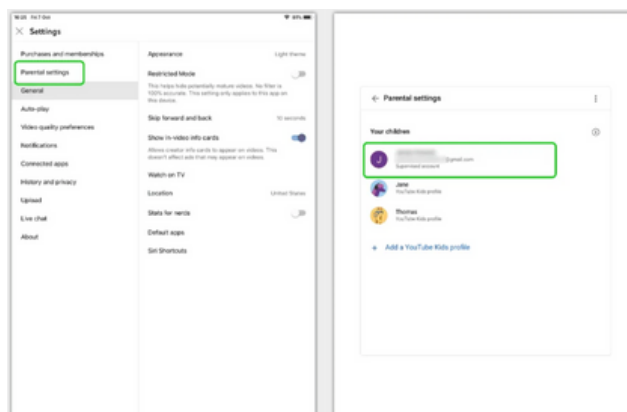
Google Account

To set up YouTube most effectively, you will need your own Google account. This involves setting up your own Google email address. This will allow you to have full control of YouTube and YouTube Kids. Google accounts can be set up through www.gmail.com. From here, you should set up a Google Account for your child by going through your profile and selecting 'Create account, For my child'. You will be prompted to fill in your child's details and accept parental responsibility for the account.

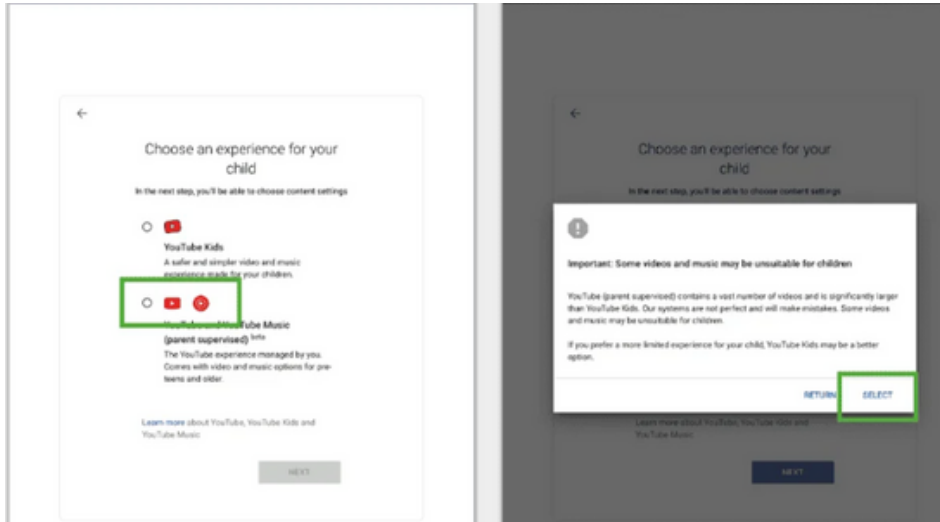


Creating a supervised account

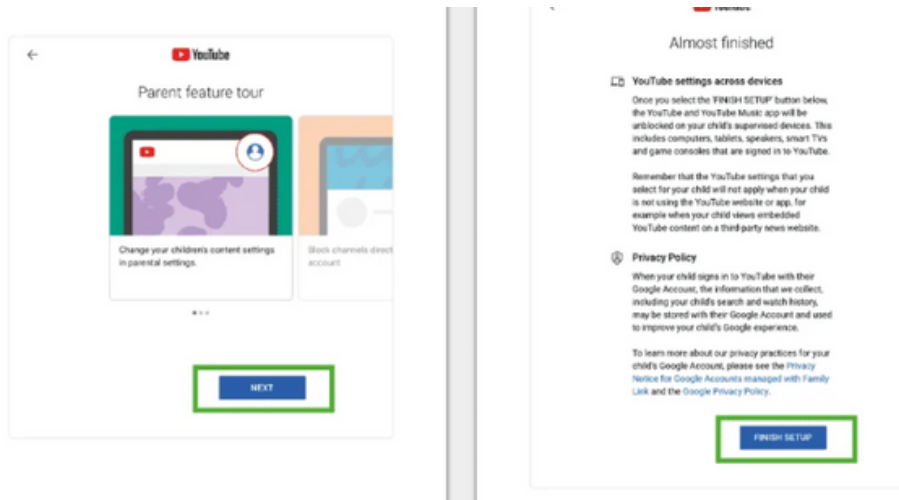
Supervised accounts are recommended for children age 13+. When you have signed into your parent Google account, select Settings and then Parental settings in the menu. You will then see your child's email account. Select the child you want to create a supervised account for.



Tick the box next to YouTube and YouTube Music, then press Next. Read the notice and click Select.

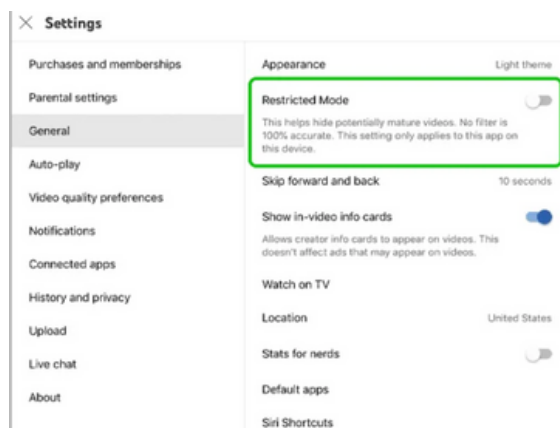
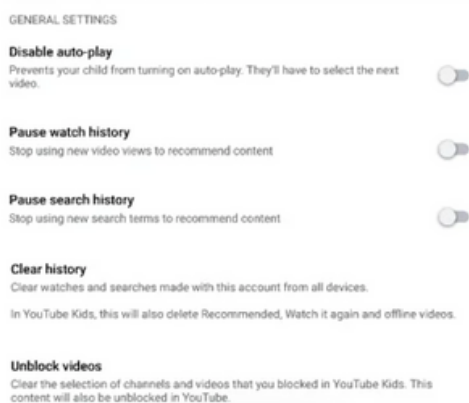


From here, you will be given the option to choose content settings for your child. Explore is recommended for 9+, Explore more is for 13+ and Most of YouTube is most content on YouTube, except content marked 18+.



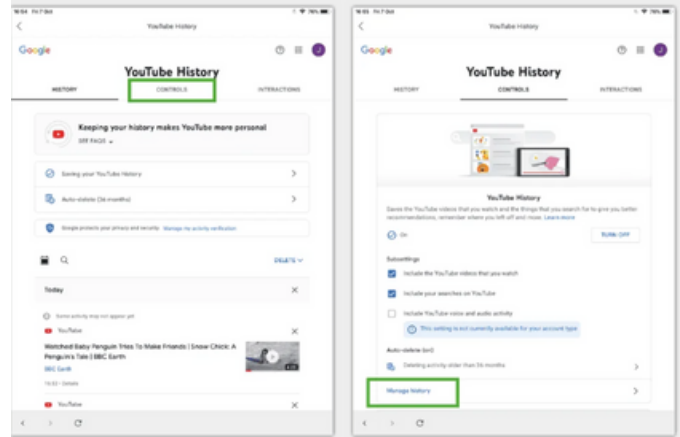
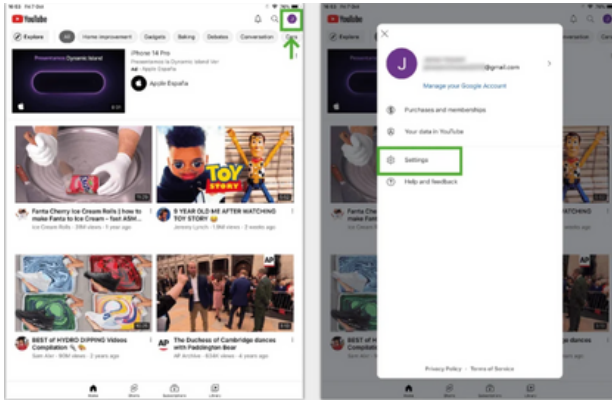
General Settings

Under General Settings, you will find various options to disabling autoplay, stop recommended content, restrict mature content and more.



Monitoring activity

It is recommended that all parents monitor their child's YouTube activity to ensure their child isn't viewing unsuitable content that may have slipped through content settings. To do this, sign in to your child's account and click their profile. From here, you can go to settings, History and Privacy and Manage all activity. This will allow you to view everything your child has viewed. If this is turned off, you will be notified via your parent account.



If you have any worries, concerns or questions regarding YouTube or Online Safety, please email the school office with your enquiry on info@swanwicksportscollege.derbyshire.sch.uk and ask for it to be forwarded to Mrs Hardy, the Online Safety Lead.