

Labour Market Information

*LMI obtained from the Office for National Statistics and Gov.uk. Last updated January 2020

Derby, Derbyshire, Nottingham, Nottinghamshire LEP

Amber Valley, Ashfield, Bassetlaw, Bolsover, Broxtowe, Chesterfield, Derby City, Derbyshire Dales, Erewash, Gedling, High Peak, Mansfield, North East Derbyshire, Nottingham City, Rushcliffe, South Derbyshire, Newark & Sherwood

Employment



UK - 76.3%
LEP - 74.8%

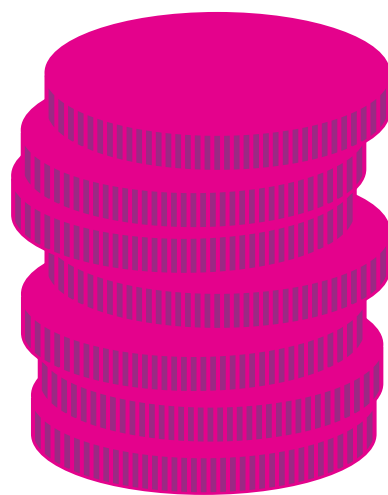
16-64 year old population = 1,383,100

Unemployment



UK - 3.8%
LEP - 4.4%

Salary



UK Average - £30,414
LEP Average - £29,895

Self-Employment



143,200 people in the region
are self-employed

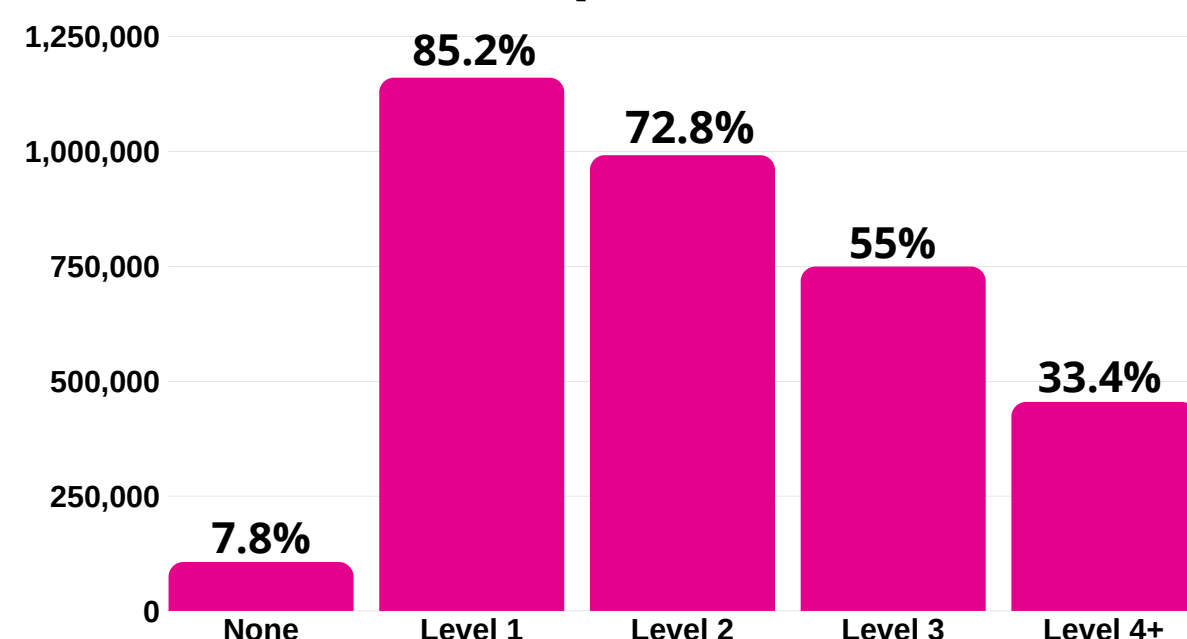
Growth by job sector by 2022

- Construction
- Health and Social Care
- Wholesale and Retail
- I.T and Cyber Security
- Support/Customer Services



Qualification levels

991,500 people have at least a level 2 qualification such as GCSEs or an NVQ.



Where do people work right now?

Most jobs

- Wholesale & Retail - 150,000 (16.2%)
- Health & Social Care - 132,000 (14.3%)
- Manufacturing - 125,000 (13.5%)
- Education - 89,000 (9.6%)
- Administration - 70,000 (7.6%)

Fewest jobs

- Real Estate - 14,000 (1.4%)
- Financial & Insurance - 12,000 (1.3%)
- Electricity, Gas & Air - 7,000 (0.8%)
- Water, Sewerage & Waste - 7,000 (0.8%)
- Mining, Quarrying & Utilities - 1,250 (0.1%)

Did you know...

The NHS is the UK's biggest employer, and the 5th biggest employer in the world!

What are the region's biggest companies to work for?

