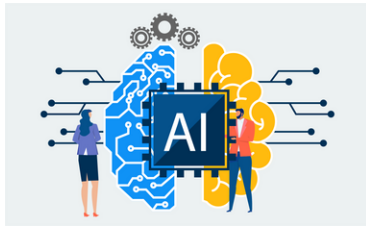


ONLINE SAFETY



AI

What is it?

AI stands for Artificial Intelligence. It is a type of technology that helps computers and apps “think” and learn in a way that is similar to how people do. AI can answer questions, recognise speech or pictures, translate languages, suggest things based on preferences and adapts to users’ needs over time. AI is built into devices and apps (like Whatsapp) as well as being available on standalone apps and software (like ChatGPT).

What are the risks?

It is important to understand the risks and limitations of AI.

- AI doesn't always get it right. It can give inaccurate information but present it as fact. This can lead to misinformation being spread.
- Some AI collects data and information so it is important to check privacy settings.
- Some children and young people can come reliant on AI for social interaction and this can lead to overreliance on AI and substituting AI for real life social interaction.
- AI lacks context. It only knows what you tell it so can misunderstand tone, feelings or the bigger picture. This is even harder for children and young people to unpick if it is something they struggle with in real life.

Benefits of AI

There are also huge benefits to AI and it can offer meaning support to children and young people when used correctly.

- AI can help personalise learning and adapt resources to the pace and needs of your child.
- There are AI Speech and Language apps that can support with communication and pronunciations.
- AI can quickly produce visual aids and prompts to support learning.
- AI can support with routine and reminders
- AI can support with using accessibility features and is used in voice-to-text, text-to-speech, and captioning to make content more accessible.

AI powered apps



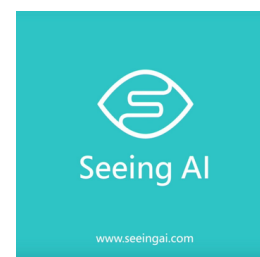
Speech Blubs Speech therapy app using voice recognition to support speech development.

Lingokids Adaptive learning app for children. Designed to help them develop academic and modern life skills through interactive games, songs, and videos.



Co:Writer Supports writing by predicting words and correcting grammar.

Seeing AI Helps visually impaired users by describing surroundings, text and objects.



Khan Academy Kids Uses adaptive AI to offer personalised learning early learning.

As with all apps, we recommend that children are supervised and privacy settings are checked by an adult before use.

If you have any worries, concerns or questions regarding AI or Online Safety, please email the school office with your enquiry on info@swanwicksportscollege.derbyshire.sch.uk and ask for it to be forwarded to Mrs Hardy, the Online Safety Lead.